

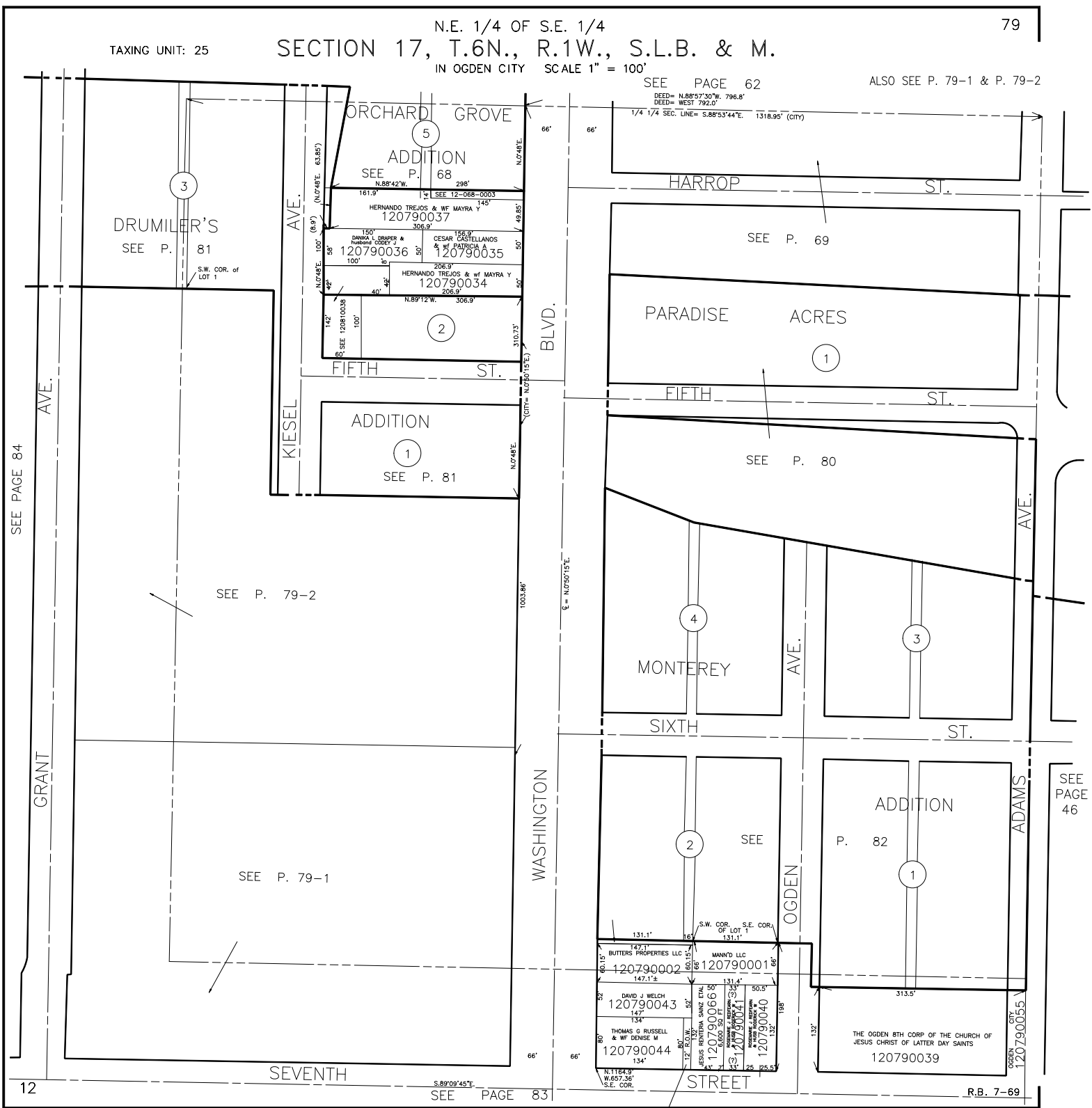
TAXING UNIT: 25

N.E. 1/4 OF S.E. 1/4
SECTION 17, T.6N., R.1W., S.L.B. & M.
IN OGDEN CITY SCALE 1" = 100'

79

SEE PAGE 62

ALSO SEE P. 79-1 & P. 79-2



SEE PAGE 84

GRANT AVE.

12

SEE P. 79-2

SEE P. 79-1

SEE PAGE 83

(JESUS RENTERIA SAINZ ETAL)
120790042
1040 SQ FT

SEE PAGE 46

R.B. 7-69